



GEOGRAPHY

0460/12

Paper 1

February/March 2019

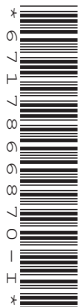
INSERT

1 hour 45 minutes

READ THESE INSTRUCTIONS FIRST

The Insert contains Fig. 2.2 for Question 2, Figs. 3.1 and 3.2 for Question 3, Figs. 5.2, 5.3 and 5.4 for Question 5, and Fig. 6.1 for Question 6.

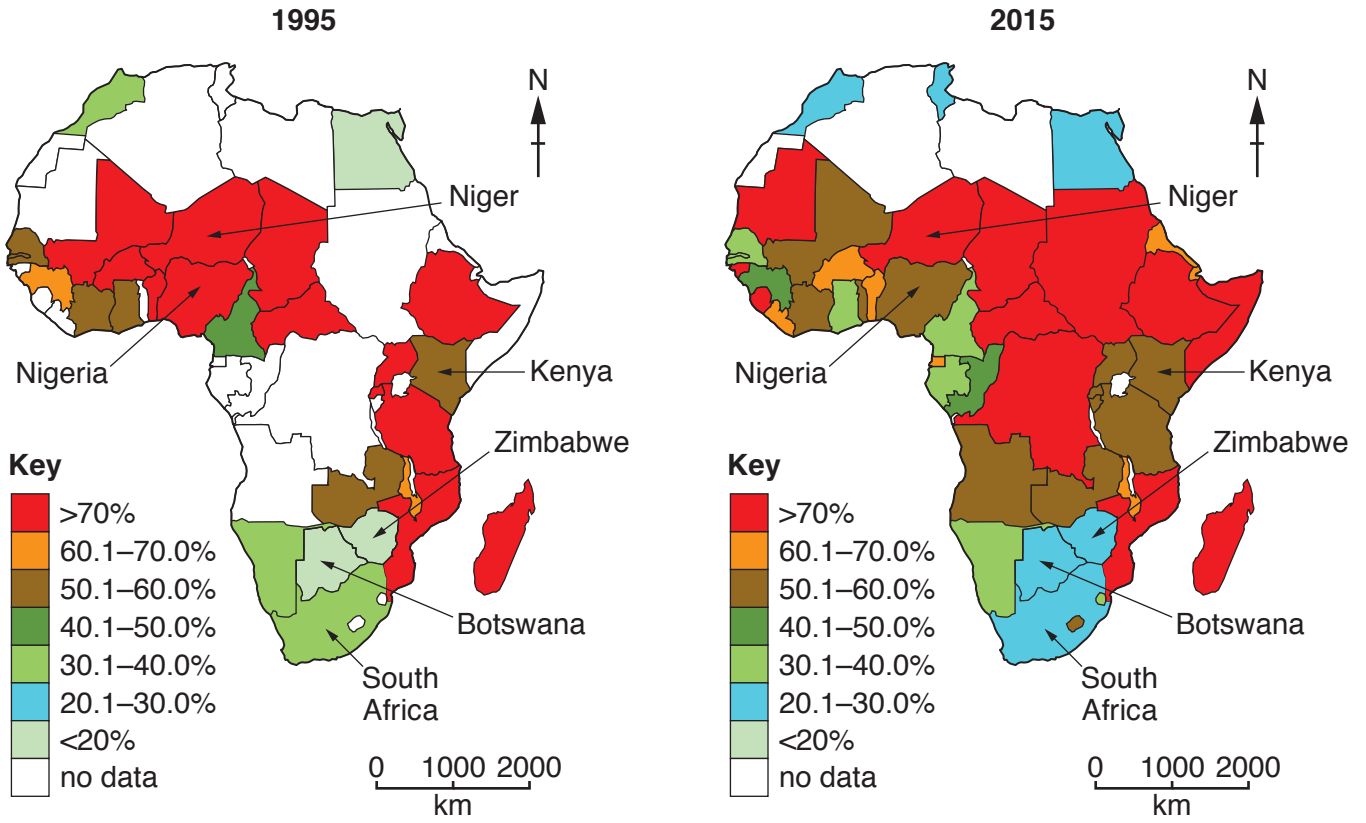
The Insert is **not** required by the Examiner.



This syllabus is regulated for use in England, Wales and Northern Ireland as a Cambridge International Level 1/Level 2 Certificate.

This document consists of **6** printed pages and **2** blank pages.

Fig. 2.2 for Question 2



3

Fig. 3.1 for Question 3

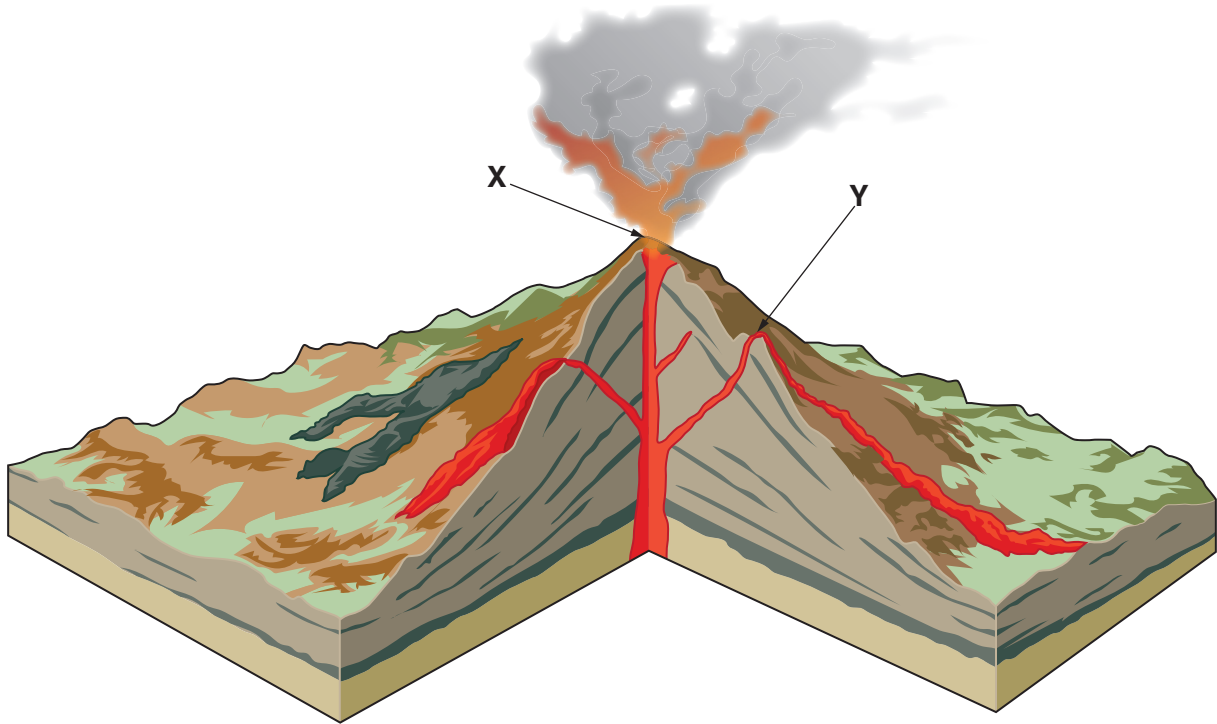


Fig. 3.2 for Question 3

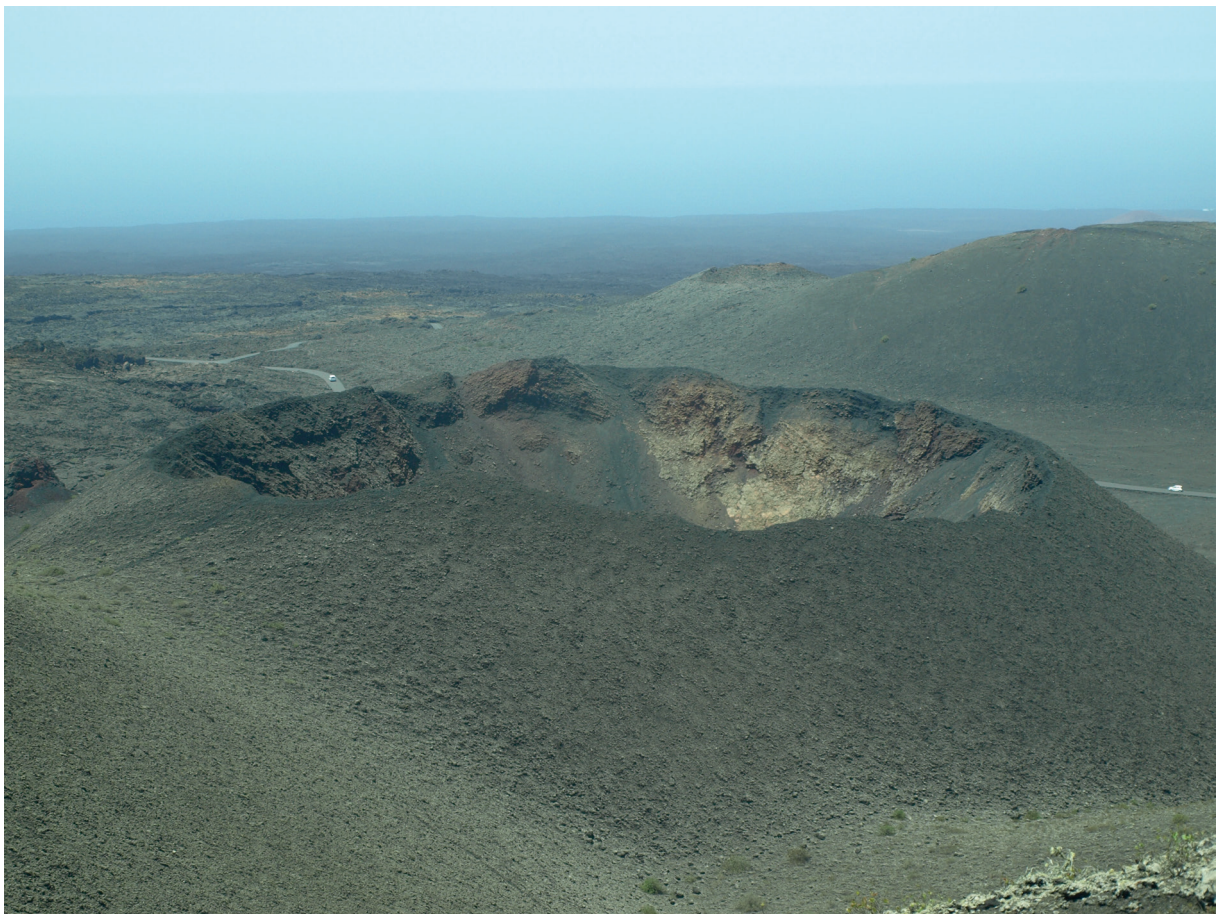


Fig. 5.2 for Question 5



Fig. 5.3 for Question 5



Fig. 5.4 for Question 5



Fig. 6.1 for Question 6



BLANK PAGE

Permission to reproduce items where third-party owned material protected by copyright is included has been sought and cleared where possible. Every reasonable effort has been made by the publisher (UCLES) to trace copyright holders, but if any items requiring clearance have unwittingly been included, the publisher will be pleased to make amends at the earliest possible opportunity.

To avoid the issue of disclosure of answer-related information to candidates, all copyright acknowledgements are reproduced online in the Cambridge Assessment International Education Copyright Acknowledgements Booklet. This is produced for each series of examinations and is freely available to download at www.cambridgeinternational.org after the live examination series.

Cambridge Assessment International Education is part of the Cambridge Assessment Group. Cambridge Assessment is the brand name of the University of Cambridge Local Examinations Syndicate (UCLES), which itself is a department of the University of Cambridge.